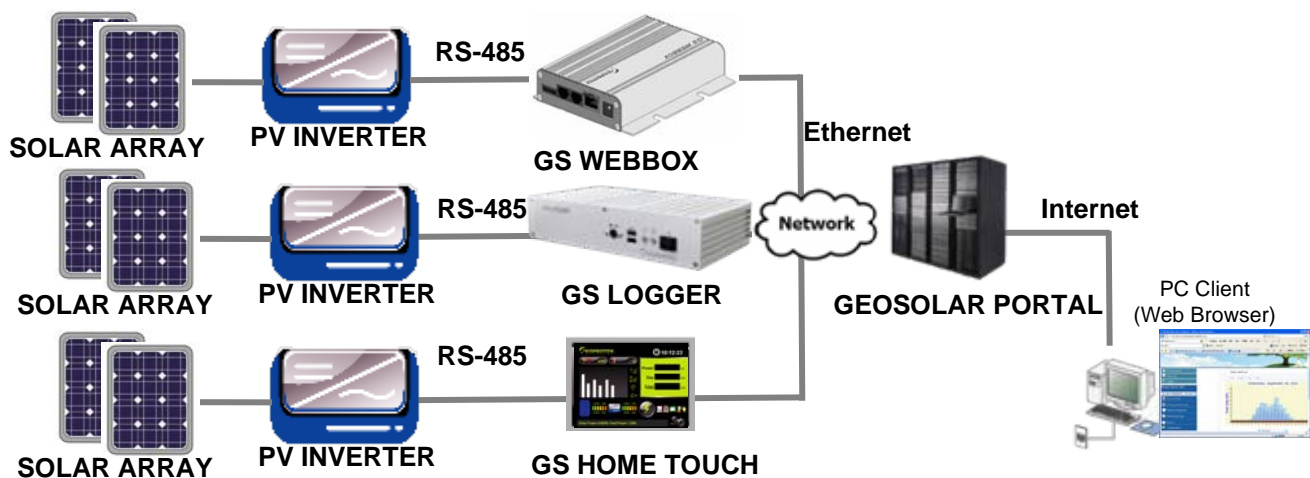




GEOSOLAR PORTAL

Professional Solar Systems Management Platform

GEO SOLAR PORTAL is a cloud database center that system integrators can manage multiple their solar systems and end system owners can review their yield report data. It also provides more advanced function that you can check the station status, compare the system or inverter performance for your PV plant. For system integrators, they can log in with their account and password to review all PV plants they had installed at the same time and make sure all of them working in best situation. For system owners, they can log in to review their report, send Email report or customized their display web page. It is the most professional platform for system integrators and the best analysis and presentation tool for a system owner.



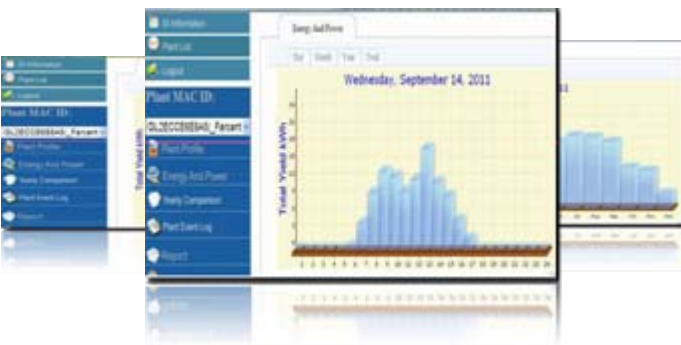
Group Management

Multiple PV Plants Central Management



For a system integrator, you can login with your account ID and password and review multiple solar systems working status at one time. System integrators can check the event log and review the report for each site. Before shipment from GEOPORTEK, each GS monitoring device (GS WEBBOX, GS LOGGER, or GS HOME TOUCH) will be assigned to a system integrator account. System integrator can login with the account to maintain the PV plants working in best condition. System owner also can login with their end user account to review the yield data report and performance.

Visualization Yield Graph



GEOSOLAR PORTAL provide Daily, Monthly, Yearly, and Total report for reviewing. The Daily report provide the 24 hours yield kWh data graph. The monthly report provides 31 daily data, the yearly report provides 12 monthly data, and the total report provides the total yield kWh from installation time. Users can select a specific date to check the yield report, also they can print the data or download the data to a .CSV file. The Yearly Comparison function allow you to check the solar system performance for each month in history years.

Performance Analysis

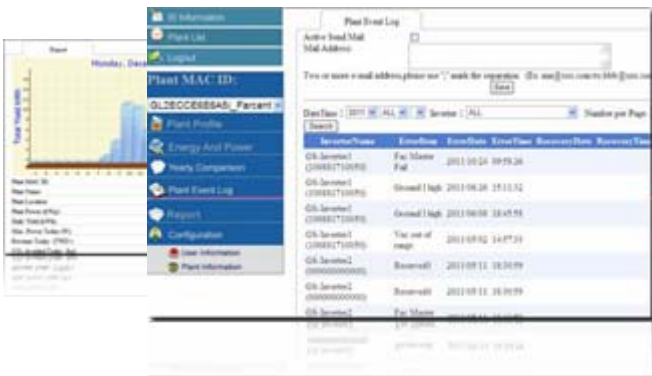
Performance Ratio (PR) Statistic



GEOSOLAR PORTAL provide statistic function that you can analyze the system performance, single inverter performance, and multiple inverters performance. For system performance, you can check the performance ratio (PR) value (Reference Yield/Final Yield) for the solar system. Also, you can select single inverter to compare the performance in this year with history years. The multiple inverters performance allow you to compare the performance between each inverter. You can select 5 inverters that you want to compare. With this statistic function, system integrator or owner can realize the system and inverter performance quickly and easily.

On-Line Diagnosis

Event Log, Email Report, Real Time Data



Once a system integrator or a system owner find the PV plant performance dropping down, they may need to check the reasons in real time. You can set the active event email report address, the system will send the report to designate email automatically. You can check the event logs on line and check the real time data for the solar system. If you hope to receive a daily yielding report, you can set the reporting time in the report page and the system will send it automatically everyday.

Personalize Web Page

Take Pictures and Upload to the Portal



For a system owner, they can take photos for their PV plant and upload it to their PV plant web page. GEOSOLAR PORTAL allows to upload 5 pictures for the banner and one picture for the plant profile. Once you upload it to your PV plant, it will slide show the pictures in turn. By this way, system owner can personalize their web page by themselves and make it more attractive and view the site images. The profile image will also display in GS MOBILE once you login with your account on mobile devices.

GS MOBILE

Free App for Mobile Device and Tablet PC



Anywhere the internet is available, you can use your iPad or iPhone as a display panel to present the yield graph or yield production of your PV system. You can download GS MOBILE from App Store. It allows you to customize your background and slides show presentation. As your mobile device connecting to the internet, you can link to the GEOSOLAR PORTAL and login with your ID and password to exam multiple PV systems working status. GS MOBILE can review Daily/Monthly/Yearly/Total yield data and check the inverter working status. It also supports on-line web camera that allow you to check the real time camera images on site.

Specification:

Technical Data	GEOSOLAR PORTAL
Recommended Browsers	Internet Explorer Version 7 or up, Safari
Supported Platforms	GS WEBBOX, GS LOGGER, GS HOME TOUCH
GeoPortal Account	One MAC ID for one plants in GEOSOLAR PORTAL
Plant Profile	Overview the key properties of the Solar System and attach the system picture on the profile
Annual Comparison	Quick yield overview of the entire operating period
Plant Event Log	Access to messages regarding plant events
Device Overview	Properties and parameters of the devices in the solar system
Custom Web Page Design	Allow to change pictures in turn on display web page
Energy Report Type	Daily, Monthly, Yearly and Overall Report
Data Buffering When Connection Broken	7 Days in end device, Auto upload once the connection recovery
Output Report Data Type	Text file (.CSV format)
Information Report	Daily report on energy yield, maximum output, CO ₂ reduction, via Email, and can automatically be send from GEOSOLAR PORTAL
Event Report	Send Event Report once alarm or errors occurs
User Levels	Administrator Level: Can management multiple system integrators, determine the configuration rights System Integrator Level: Can management multiple PV plants End User Level: Can monitor the PV plants data.